

File Name: Du920Pfgq3 Manual.pdf

Size: 2083 KB

Type: PDF, ePub, eBook

Category: Book

Uploaded: 2 May 2019, 21:49 PM

Rating: 4.6/5 from 833 votes.

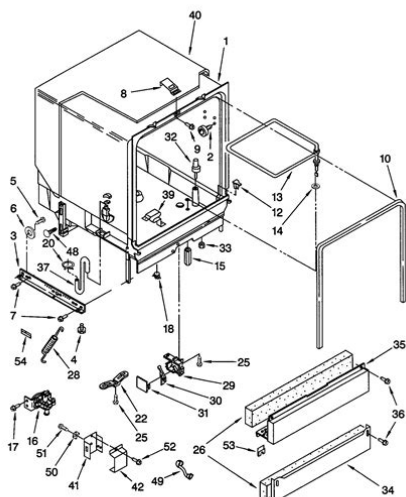
Status: AVAILABLE

Last checked: 17 Minutes ago!

In order to read or download Du920Pfgq3 Manual ebook, you need to create a FREE account.

[Download Now!](#)

eBook includes PDF, ePub and Kindle version



[Register a free 1 month Trial Account.](#)

[Download as many books as you like \(Personal use\)](#)

[Cancel the membership at any time if not satisfied.](#)

[Join Over 80000 Happy Readers](#)

Book Descriptions:

We have made it easy for you to find a PDF Ebooks without any digging. And by having access to our ebooks online or by storing it on your computer, you have convenient answers with Du920Pfgq3 Manual . To get started finding Du920Pfgq3 Manual , you are right to find our website which has a comprehensive collection of manuals listed.

Our library is the biggest of these that have literally hundreds of thousands of different products represented.



Book Descriptions:

Du920Pfgq3 Manual

Hold times are long. Forms a heat resistant bond. Often used for gaskets, seals and burner grate feet. This bearing is mounted underneath the spray arm. The door gasket creates a seal around the dishwasher to prevent water from leaking out. If the gasket is torn, the dishwasher will leak water. If the dishwasher wont fill properly, then the water valve is likely restricted and will need replacement. If the dishwasher is under filling, it wont clean dishes effectively. Do not reuse the old harness. The thermal fuse opens to cut off power to the dishwasher if the dishwasher overheats. If the thermal fuse fails, the dishwasher will not start. If the thermal fuse has failed, investigate what caused the dishwasher to overheat. Since 1912, weve learned to recognize the most common problems. Do any of these look familiar. Join Repair Clinics VIP email list for 10% off, plus other discounts and tips. Weve got millions of parts, hundreds of brands, and thousands of stepbystep videos— everything you need to find it, fix it and finish the job right. Must be assembled. Note This part has been redesigned by the manufacture. Blue is no longer available. White only. The rubber seal holds the lower spray arm down and in place. It heats up to push a piston, which in turn opens the dispenser door. This is what your door spring would hook into and it prevents the metal spring from rubbing against the metal on the side of the door. Used to provide support for heavier dishwasher doors, mainly those with custom wood panelling. This part helps stop your dishwasher from leaking and helps with the proper draining of the dishwasher. This part helps stop your dishwasher from leaking and helps with the proper draining of the dishwasher. This part helps stop your dishwasher from leaking and helps with the proper draining of the dishwasher. They keep the water away from the corners of the appliance and therefore eliminating the rush of water behind the door. <http://www.dmkaudit.sk/101/upload/dakota-rt-service-manual.xml>

- **whirlpool du920pfgq3 manual, du920pfgq3 manual.**

It is located on the bottom of the dishwasher. Used with the heating element. The attaching solenoids on the valve open and close according to the desired amount of water needed. Once the dryer temperature reaches a certain point, this part will shut down power to the heating element. Get Parts, Repair Help, Manuals and Care Guides for DU920PFGQ3 Whirlpool Dishwasher. View parts like High Limit Thermostat and Seal, Lower Sprayarm. Hi there, Save hours of searching online or wasting money on unnecessary repairs by talking to a 6YA Expert who can help you resolve this Need to fix your DU920PFGQ3 Dishwasher. Use our part lists Whirlpool DU920PFGQ3 Dishwasher Parts. Search within. Do it Yourself, Manual. No Longer Whirlpool DU920PFGQ3 Dishwasher Parts and Accessories. Largest Selection, Best Prices, Free Tech Sheet do it Yourself, Manual WPLLIT0677967 2. Whirlpool DU920PFGQ3 Pdf User Manuals. View online or download Whirlpool DU920PFGQ3 Use And Care Manual. 7 Oct 2013 The excerpt below is from the service manual. You will need to replace the touch panel but only the black panel is still available. That panel is Download the manual for model Whirlpool DU920PFGQ3 dishwasher. Whirlpool Owners manual All parts. Whirlpool DU920PFGQ3 dishrack diagram. It contains circuit diagrams schemas etc. It also usually contains parts catalog. After placing order well send You download instructions on Your email. See below for delivery information Well send You download instructions on Your email. What is PDF How to get Adobe Reader I recommend Manuals in PDF to everyone. Only be aware when manuals are offered as Vol1 and Vol2 and as singles. You do not know what you get. Falko Very good. We appreciate your patience. Save Money Take advantage of exclusive product promotions and special offers. You can either register your product online or drop your product registration card in the mail. <http://www.cottagegrad.ru/files/dakota-scout-kvm-manual.xml>

All you need to register is the model and serial number and the date of purchase as shown on your receipt. If you have any questions about registering your product, please contact Frigidaire at 8003744432. They are also usually less expensive than stainless steel interiors. Typically these interiors are white, but many models offer a Granite Grey tone for a premium look and added stain protection. You simply choose your wash and dry settings using these controls, push start, and close the door. Any illuminated controls will dim and the dishwasher cycle will start. You can see them throughout the wash cycle. When you run a high temperature or sanitizing wash cycle, it can give you the best drying performance. The dispenser window may show a dot to indicate its level, or it may function like a fuel gauge. If the dispenser is low, remove the cap and fill the reservoir. If you are uncertain if your water is the appropriate heat, check your water heaters temperature reading. This helps support the site. Thank You for your support! On this page, I have the instructions and the parts you need to identify and fix the problem. Note The split in the part is a manufacturer design and not a damaged part. Getting to the pump impeller was the easy part. Replacing it was pretty hard. I had to order a new pump impeller kit. Then I had to drill holes in the old impeller until the top disc came off. Then I had to work the remaining lower part off the shaft below. And though I tried both the old and the new screws in the top of the new impeller, neither screw would make contact with the threading in the shaft below, so I ended up leaving the screw out on top of the impeller. As I was trying to put the top part of the pump back on after replacing the old washer, I discovered that the impeller was not all the way down on the shaft, so I had to push on it several times till the top of the pump would fit properly on top of it.

It seems that the new impeller part was not identical to the old impeller part, so the new part was harder to put on the shaft. I don't think the new impeller will come off anytime soon. In fact, it would take a lot of time and effort and a new kind of tool to get the impeller off the shaft without damaging it severely. After all that effort, and cleaning out the chopper blade area I found a small measuring spoon, a small, rusted, rectangular piece of metal, and a circular piece of metal or plastic within this area, the washer is working well with no odd noises. If the impeller would have been easier to remove from the shaft, the repair could have been done within 4560 minutes or so, adding the time needed to clean the chopper blade area. All in all, I will do it again if the problem recurs. Kenmore, whirlpool, and whoever else makes these impeller kits needs to keep the original impeller design and either provide a special tool for removing the impeller or include instructions on how to make such a tool. 1015 dollars for such a tool would be reasonable, considering how much you save in labor charges doing the work yourself. Removed everything out of the way from bottom rack to drain impeller. Ordered the kit, received it in about 4 days, and installed it. In the process, I did not find any major obstructions. Woops! Went back to researching draining problems and found 2 other possible causes of the dishwasher not draining. 1. Checked the drain line from the dishwasher to the sink disposer. My way to check to see if the line was clear was a little gross, but on the disconnected end under the dishwasher I blew into it and discovered no obstruction the air passed on through the line. 2. Checked the drain trap from the sink to make sure there was no obstruction there. Ok, yes those things should have been checked first, for sure after disconnecting power and shutting the water off to the dishwasher but I'm learning.

<https://www.cocreationsmanager.com/blog/adt-home-security-manuals>

So now I have a completely reassembled drain inside the dishwasher. The drain line and trap are clear. Back to researching. Had to start reading comments on the videos to actually find the problem. OK, didn't know what or where it was. New subject to search for videos. I found where it was, what it was, and how to get it out. Took it out and what do you know, it was clogged. Probably should have replaced it, but just cleaned it out and THIS fixed the drain problem. Moral of the story, think and learn through before any effort made. Narrow the problem down and save time by following a procedure from simplest to more complex. I now know much more about my particular

dishwasher drain than I did before the fix. Most difficult task was removing the wash impeller. They really do mean that it may be necessary to use hammer and chisel to remove this impeller. That one screw took a good hour to get out. Looks like its almost 20 years old now. But after talking to my brother whose gone through 3 dishwashers in 10 years, and noticing some of the new ones dont have macerators, I decided Id look at fixing it instead of replacing it. The water temp and level seemed a hair low but not too bad less than half inch below the heating elements and 116 degrees, so I started to clean it. When I went to remove the impeller screw, it just spun freely in both directions while holding the plastic nut to keep the impeller still. I tried to put some upward pressure on the impeller with not luck. The sheet metal at the bottom prevents access to the drive shaft from below, so I just chiseled out the impeller. I could then hold the drive shaft still and remove the impeller screw. I cleaned up the shaft and used the impeller kit to replace everything after giving it a good cleaning. Unfortunately, I put the new impeller on a little too far before getting the shaft clean enough, as I couldnt get it back out. So I just pounded it down. Figure Ill have to chip out the impeller next time again.

Id recommend you dont put a lot of pressure on it when putting it on so that it will come back out without breaking it. Anyway, after finishing cleaning everything and putting it all back together, I stopped the cycle after fill and added a couple of cups of vinegar, letting that soak for a couple of hours. I then finished the cycle. It was word for word for what my problem was. I watched the video on how to fix it. I had a question and did a live chat twice. Answered all my questions. Parts came in and I installed and it fixed the problem. Back to running good again. The installation went exactly as portrayed in the video unfortunately it didn't completely fix the problem. Went from not draining at all to draining a little. Read some more and order the gasket and seals replacement kit. Wish I would have initially ordered both kits. Installed, no change. Made the assumption a portable dishwasher wouldn't have a drain back flow preventer. Wrong, It did, ordered and replaced it, FIXED. A reasonable amount of money in parts and some extremely cheap labor and my 12 year old dishwasher is like new. Thanks for the help The picture shown of the part is looking at the bottom of the cap, which you dont see until you unscrew the cap and look at the bottom threaded connector. I didnt order the part at first because I thought it was the wrong part. Unscrew the old one and you will see its the right part. Easy peezy, works fine. Instruction sheet included. Once it arrived I removed the broken off end of plug from the dishwasher and screwed in the new one. An, ordered the part. The repair took no time The repair took no time and now I have my dishwasher back actually cleaning dishes. Like 2 days. Watched a helpful YouTube video to install the spring so simple! and it's working better than new! The video showed how to do it and what part was necessary. It was an easy fix for anyone.

I was surprised that shipping was twice the price of the part, but even so the total was probably only a tenth of what a repairman would have charged. For the complete detergent dispenser kit order 4387043. I followed instructional video which was helpful except the video host did not mention the plastic strip that is pushed onto the bottom of the inner door panel and it took quite some time to figure where it went. Dishwasher is well over 20 years old so unsure if the part would match. But it did! Includes detergent latch and snap. Could not get the cover on without the spring moving out of place. Watched video about 6 times. Had to put a drill bit inside coil of spring and bend it more to get it to fit. Spring configuration was about 12 and 1 oclock. Bent to about 12 and 2. Now spring fit on cover and stayed. I couldnt find my manual and you help get the right part. Thank you for all your help. Never done it before, but the help from appliance pros it was easy just took time However, on my model, I couldnt reach the Thermostat from the front access as per the instructional video that is posted. I found on my unit, I had to pull the unit and turn it upside down. Much like when replacing the heating element that I replaced earlier in this repair cycle. Wish I had replaced both these parts at the same time. But it is tough to determine if the original heating issue was due to heating

element or the thermostat. I think I need to replace the bottom element just in case. I saw the video posted by AppliancePartsPros and it was the exact same problem I was having. I looked up the part and ordered it. I received the part in just a couple of days. Reviewed the video and installed the part in about 15 minutes. It was easy. So I replaced the valve right in my kitchen. Old unit had a different elbow. Copper supply line was larger than the elbow would accommodate. Required reduction fittings. With new elbow tightening mounting screw was no longer accessible with nut driver.

Required use on small wrench. Normally when this valve fails it has the opposite effect and you do not get any water, but I believe something must have got into the valve and blocked it from shutting off. This is a very easy part to replace and it fixed my Whirlpool dishwasher. Just go to YouTube and search dishwasher problems and there are several videos to show you how to proceed. This is the second time I have purchased parts from AppliancePartsPros and am completely satisfied with their service. It looks exactly like the original part and fit perfectly. It was so bad it was shaking the pipes in my house. It sounded like it was opening and closing the inlet valve regularly, so I suspected it was a bum solenoid. I ordered this part along with the inlet adapter and followed the video instructions. Here's how my experience differed from the video I had to mount the device further back on the frame, which wasn't ideal. That's a great idea if you want massive amounts of leaks. What I had to do was put about 6 turns of teflon tape on all threads including the flexible input line and install the rubber gasket that comes with the adapter between the adapter body and the large nut which connects to the valve. That stopped all leaks. After the replacement, my dishwasher was quiet again, so I was very satisfied. This took a few minutes, then placed my order at 230 pm Friday, the part arrived Saturday morning. Thank You, Appliance Parts Pros. The dish washer should never have any action while the door is open but continued to fill even with the door open. Flooded the kitchen caused the water to run into the basement. After replacement of the fill valve I insured proper function of the float and float switch. Everything works great. Create one here. Creators are allowed to post content they produce to the platform, so long as they comply with our policies. United Kingdom. Company number 10637289.

When you are looking for Whirlpool model number DU910PFGZ0 SERVICE MANUAL, DU910PFGZ1 SERVICE MANUAL, DU920PFG, DU920PFGB0, DU920PFGB0 SERVICE MANUAL, DU920PFGB1, DU920PFGB1 SERVICE MANUAL, DU920PFGB2, DU920PFGB2 SERVICE MANUAL, DU920PFGB3, DU920PFGB3 SERVICE MANUAL, we have the parts and repair manuals you require to properly fix the Whirlpool device. Our service manuals are available in hard copy, CD ROM and pdf formats. If the Whirlpool service manual you select is available as a downloadable.pdf, you be reading your service manual the same day you purchase it. If appears, then the manual is available for immediate download and you will receive the information right after placing your order We will then attempt to locate the service manual for you and in most cases get back to you within 24 hours. Model and serial numbers are located inside the tub on a tag near the left side of the door opening Once there, you will be given The site maintains the reference Use of this Web site constitutes acceptance of the Terms of Service and Privacy Policy. Please download your Instructions for Use and all other product documentation here Whirlpool DU920PFGQ3 Manuals Manuals and User Guides for Whirlpool DU920PFGQ3. We have 1 Whirlpool DU920PFGQ3 manual available for free PDF download Use And Care Manual. Whirlpool DU920PFGQ3 Use And Care Manual 76 pages Brand J'ai le meme probleme avec un secheling whirlpool awz 865 il tourne mais ne chauffe plus. J'ai suivi les conseils du forum et j'ai demonte le panneau arriere un klixon a grille, ainsi que les fiches du faisceau. J'ai commande le kit klixon, livre en 2 jours. Powered by WordPress. Has just started. Remains locked with detergent inside. Can this be fixed easily. I have a whirlpool dishwasher 280 0 that will not drain. What can I It kicked on during a check for power before installing but immediately turned off. I. ADP5962 Freestanding Dishwasher Start and drain pump drain off water for 4min.

F4 failure code drain ing failure. The filter is cleaning. Drive line is not. BuiltIn Dishwasher Dishwasher BuiltIn Dishwasher Dishwasher BuiltIn Dishwasher Dishwasher The cycle wont complete if the power is interrupted. Reset the circuit breaker if tripped, or change out any. BuiltIn Dishwasher Dishwasher Then it wont drain after the rinse cycle.BuiltIn Dishwasher Dishwasher If this does not work then you may have to take the pump off and check to see if the impeller is clogged. If you do not hear the pump come. DD603SS BuiltIn Dishwasher Answer questions, earn points and help others. The very best way to ensure youre getting the correct specs is to download the owners manual which should contain all the information you need, including full specifications of your Whirlpool DU920PFGQ3.If my Dishwasher specs are unavailable then please, by all means, contact us at FindMySpecs.com. Learn more Easy to Install Made Exactly to Fit For Most Top Brand Dishwashers. Check Description for Model Compatibility. Whirlpool brands include Whirlpool Maytag KitchenAid JennAir Amana Magic Chef Admiral Norge Roper and others This is not a Whirlpool OEM product. Use of the Manufacturers trade names and logos are the registered trademarks of their respective owners. Any use of the Manufacturers brand name, part numbers or model designation for this product is made solely for purposes of demonstrating and for identification compatibility and are displayed for descriptive purposes only. Use of them does not associated with, imply any affiliation or endorsement by any manufacturer.

Compatible with MDB4621AWB0 MDB4621AWS0 MDB4621AWW0 MDB4629AWB0 MDB4629AWB1 MDB4629AWS0 MDB4629AWS1 MDB4629AWW0 MDB4629AWW1 7DU920PWKB0 7DU920PWKQ0 7DU920PWKS0 CUD6710TB0 CUD6710TQ0 CUD6710WB0 CUD6710WB1 CUD6710WQ0 CUD6710WQ1 DP8700XBN1 DP8700XYN3 DP8700XYN4 DP920PFGQ1 DP920PFGQ2 DP920PFGQ3 DP920PFGQ4 DP920PFGY0 DP920PFGY1 DP920PFGY2 DP920PFGY3 DP920PFGY4 DP920QWDB0 DP920QWDB2 DP920QWDB3 DP920QWDB4 DP920QWDB5 DP920QWDB6 DU620PWKQ0 DU8500XB0 DU8500XB1 DU8550XB0 DU8550XB1 DU8550XX3 DU8550XX4 DU8560XB0 DU8560XB1 DU8560XX1 DU8560XX2 DU8700XB0 DU8700XB1 DU8700XY4 DU8700XY5 DU910PWKB0 DU910PWKQ0 DU911PWKB0 DU911PWKQ0 DU915PWKB0 DU915PWKQ0 DU915PWKS0 DU915PWKT0 DU915QWDB0 DU915QWDB1 DU915QWDB5 DU915QWDB6 DU915QWDQ0 DU915QWDQ1 DU915QWDQ5 DU915QWDQ6 DU920PFGB0 DU920PFGB1 DU920PFGB2 DU920PFGB3 DU920PFGB4 DU920PFGQ0 DU920PFGQ1 DU920PFGQ2 DU920PFGQ3 DU920PFGQ4 DU920PFGT4 DU920PFGZ0 DU920PFGZ1 DU920PFGZ2 DU920PFGZ3 DU920PFGZ4 DU920PWKB0 DU920PWKQ0 DU920PWKS0 DU920PWKT0 DU920QWDB0 DU920QWDB2 DU920QWDB3 DU920QWDB4 D About This Item We aim to show you accurate product information. Manufacturers,See our disclaimer Features ForeverPRO Dishwasher Adjuster Part Number W10204131 replaces 8268848 3380860 1482032 3373365 3380395 AH2344798 EA2344798 PS2344798 Fits Whirlpool Dishwasher.

Compatible with MDB4621AWB0 MDB4621AWS0 MDB4621AWW0 MDB4629AWB0 MDB4629AWB1 MDB4629AWS0 MDB4629AWS1 MDB4629AWW0 MDB4629AWW1 7DU920PWKB0 7DU920PWKQ0 7DU920PWKS0 CUD6710TB0 CUD6710TQ0 CUD6710WB0 CUD6710WB1 CUD6710WQ0 CUD6710WQ1 DP8700XBN1 DP8700XYN3 DP8700XYN4 DP920PFGQ1 DP920PFGQ2 DP920PFGQ3 DP920PFGQ4 DP920PFGY0 DP920PFGY1 DP920PFGY2 DP920PFGY3 DP920PFGY4 DP920QWDB0 DP920QWDB2 DP920QWDB3 DP920QWDB4 DP920QWDB5 DP920QWDB6 DU620PWKQ0 DU8500XB0 DU8500XB1 DU8550XB0 DU8550XB1 DU8550XX3 DU8550XX4 DU8560XB0 DU8560XB1 DU8560XX1 DU8560XX2 DU8700XB0 DU8700XB1 DU8700XY4 DU8700XY5 DU910PWKB0 DU910PWKQ0 DU911PWKB0 DU911PWKQ0 DU915PWKB0 DU915PWKQ0 DU915PWKS0 DU915PWKT0 DU915QWDB0 DU915QWDB1 DU915QWDB5 DU915QWDB6 DU915QWDQ0 DU915QWDQ1 DU915QWDQ5 DU915QWDQ6 DU920PFGB0 DU920PFGB1 DU920PFGB2 DU920PFGB3 DU920PFGB4 DU920PFGQ0 DU920PFGQ1 DU920PFGQ2 DU920PFGQ3 DU920PFGQ4 DU920PFGT4 DU920PFGZ0 DU920PFGZ1 DU920PFGZ2 DU920PFGZ3 DU920PFGZ4 DU920PWKB0 DU920PWKQ0 DU920PWKS0 DU920PWKT0 DU920QWDB0

DU920QWDB2 DU920QWDB3 DU920QWDB4 D. Easy to Install Made Exactly to Fit For Most Top Brand Dishwashers. No Questions Asked Money Back Guarantee. Proud USA Based Company. Comes with 1 Year Warranty or 90 Day Returns. PRO Grade Premium Adjuster Meets or Exceeds OEM Specifications Quality. Comes Brand New in Original Retail Packaging. ForeverPRO Dishwasher Adjuster Part Number W10204131 replaces 8268848 3380860 1482032 3373365 3380395 AH2344798 EA2344798 PS2344798.

Compatible With Most Whirlpool Dishwashers including MDB4621AWB0 MDB4621AWS0 MDB4621AWW0 MDB4629AWB0 MDB4629AWB1 MDB4629AWS0 MDB4629AWS1 MDB4629AWW0 MDB4629AWW1 7DU920PWKB0 7DU920PWKQ0 7DU920PWKS0 CUD6710TB0 CUD6710TQ0 CUD6710WB0 CUD6710WB1 CUD6710WQ0 CUD6710WQ1 DP8700XBN1 DP8700XYN3 DP8700XYN4 DP920PFGQ1 DP920PFGQ2 DP920PFGQ3 DP92 Whirlpool brands include Whirlpool Maytag KitchenAid JennAir Amana Magic Chef Admiral Norge Roper and others Specifications Manufacturer Part Number FPW10204131 UPC 194878003901 Brand ForeverPRO Product Name ForeverPRO W10204131 Adjuster for Whirlpool Dishwasher 8268848 3380860 1482032 3373365 Manufacturer ForeverPRO Customer Reviews Write a review Be the first to review this item. Ask a question Ask a question If you would like to share feedback with us about pricing, delivery or other customer service issues, please contact customer service directly. So if you find a current lower price from an online retailer on an identical, instock product, tell us and we'll match it. See more details at Online Price Match.All Rights Reserved. To ensure we are able to help you as best we can, please include your reference number Feedback Thank you for signing up. You will receive an email shortly at Here at Walmart.com, we are committed to protecting your privacy. Your email address will never be sold or distributed to a third party for any reason. If you need immediate assistance, please contact Customer Care. Thank you Your feedback helps us make Walmart shopping better for millions of customers. OK Thank you! Your feedback helps us make Walmart shopping better for millions of customers. Sorry. We're having technical issues, but we'll be back in a flash. Done. Recently after running a cycle and opening the door we are finding that the soap dispenser door hasn't opened. It opens manually just fine, but not during wash cycle. Is this something I can repair myself without calling in a technician.

I've searched online and the fix seems to be a possible faulty motor. Could this be the case or possibly something else Let me know if you need any additional info., will be glad to provide it if I have it.I've searched online and the fix seems to be a possible faulty motor. Quote Is this something I can repair myself without calling in a technician. We don't know your skill level or what tools you have.normally not overly difficult When the soap door should open in the cycle the wax motor is powered and the plunger moves to trip the dispenser open. Power tested with a volt meter and the wax motor doesn't do anything would indicate a bad wax motor.The soap dispenser door seems to operate correctly now. I now have another issue. Once the cycle is complete and dishes are dry I open the door. The soap door dispenser is open, but now the soap seems to be caked in a clump in the door. The prerinse soap has all dissolved, but the soap under the flap still remains and the dishes don't appear to be clean.what now Any advice would be appreciated.thanks. Thanks Mike Quote or water temps. Let fill, open door, stick a thermometer in the water and test water temps. jeff. Server Time 20200923 060206 UTC.

<http://stroyzona.com.ua/companynews/adt-home-security-control-panel-manual>